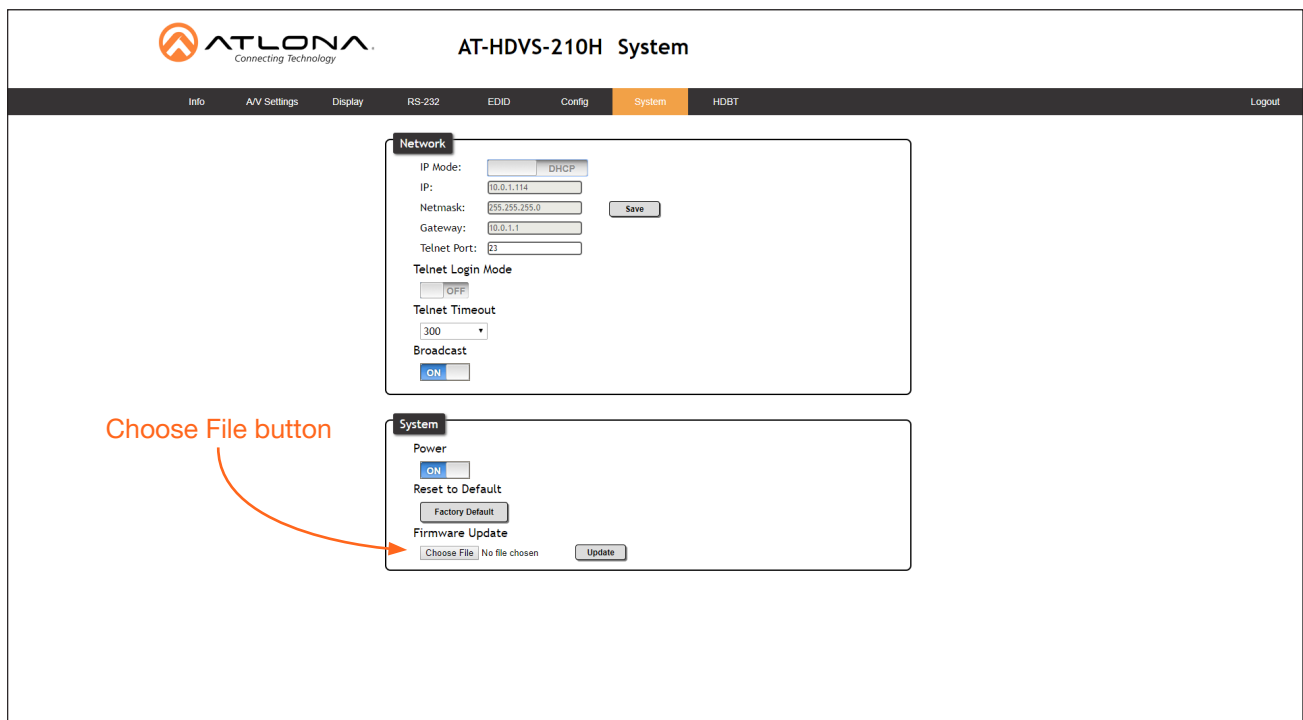


# Update Instructions

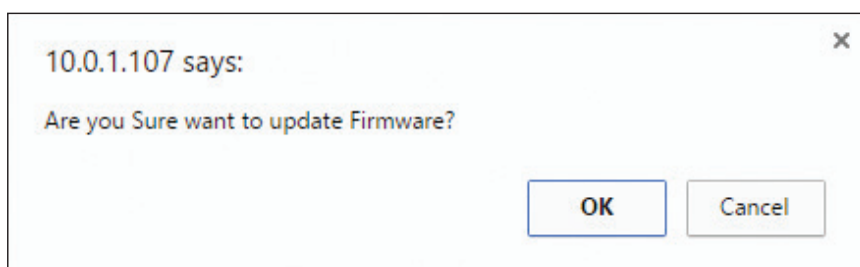
## Using the Web GUI

Requirements:

- AT-HDVS-210H-TX-WP or AT-HDVS-210U-TX-WP
  - Firmware file
  - Computer running Microsoft Windows
1. Connect an Ethernet cable from the computer, containing the firmware, to the same network where the AT-HDVS-210x-TX-WP is connected.
  2. Go to the **System** page in the web GUI.



3. Click the **Choose File** button, under the **Firmware Update** section.
4. Browse to the location of the firmware file, select it, and click the **Open** button.
5. Click the **Update** button, under the **Firmware Update** section.
6. The following message box will be displayed.



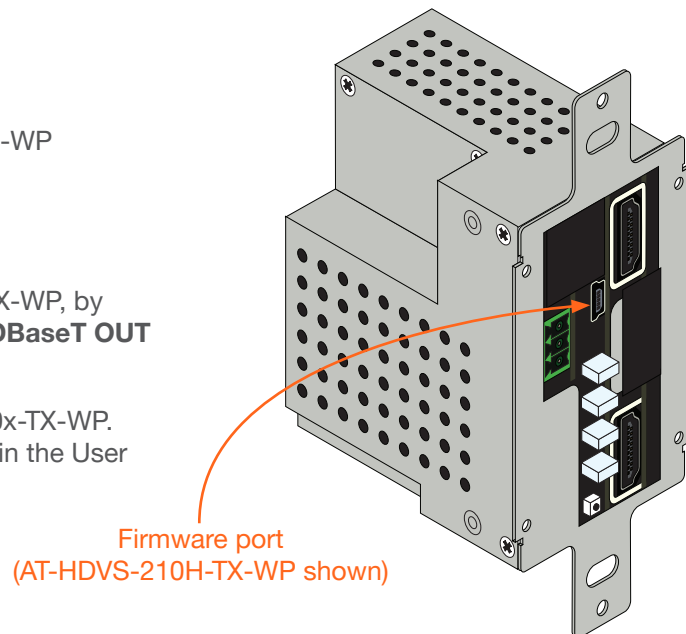
7. Click the **OK** button to begin the firmware update process. Click the **Cancel** button to cancel the process.
8. After the firmware update process is complete, the **Login** screen will be displayed.

### Using USB

#### Requirements:

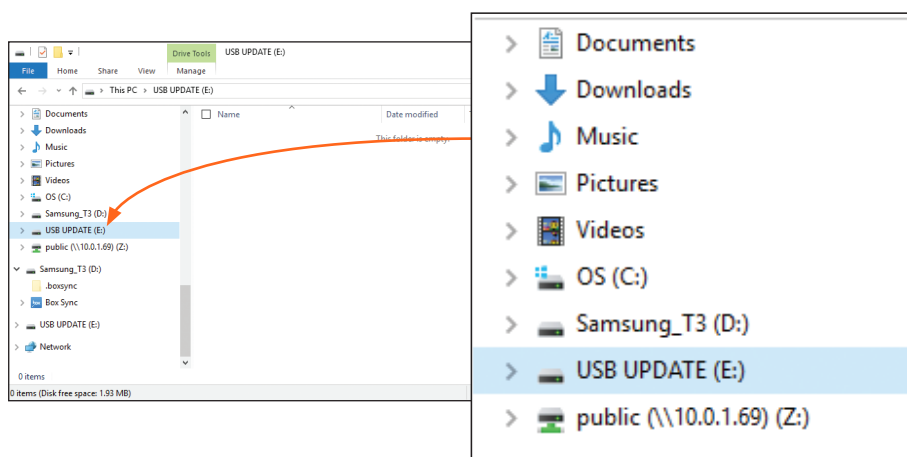
- AT-HDVS-210H-TX-WP or AT-HDVS-210U-TX-WP
- Firmware file
- Computer running Windows
- USB-A to USB mini-B cable

1. Disconnect power from the AT-HDVS-210x-TX-WP, by disconnecting the Ethernet cable from the **HDBaseT OUT** port on the unit.
2. Remove the wall plate from the AT-HDVS-210x-TX-WP. Refer to **Faceplate Removal and Assembly** in the User Manual, if necessary.
3. Locate the firmware port.



4. Connect the USB-A to USB mini-B cable between the PC and the firmware port on the AT-HDVS-210x-TX-WP. The unit will be powered by the USB cable.
5. The USB UPDATE folder will be displayed.

If this folder is not displayed, automatically, select the USB UPDATE drive from Windows Explorer.



6. Delete all files from the USB UPDATE drive, if any are present.
7. Drag-and-drop the firmware file to the drive.
8. After the file has been copied, disconnect the USB cable from both the computer and the AT-HDVS-210x-TX-WP.
9. The firmware update process is complete.
10. Reconnect the Ethernet cable to the **HDBaseT OUT** port.