

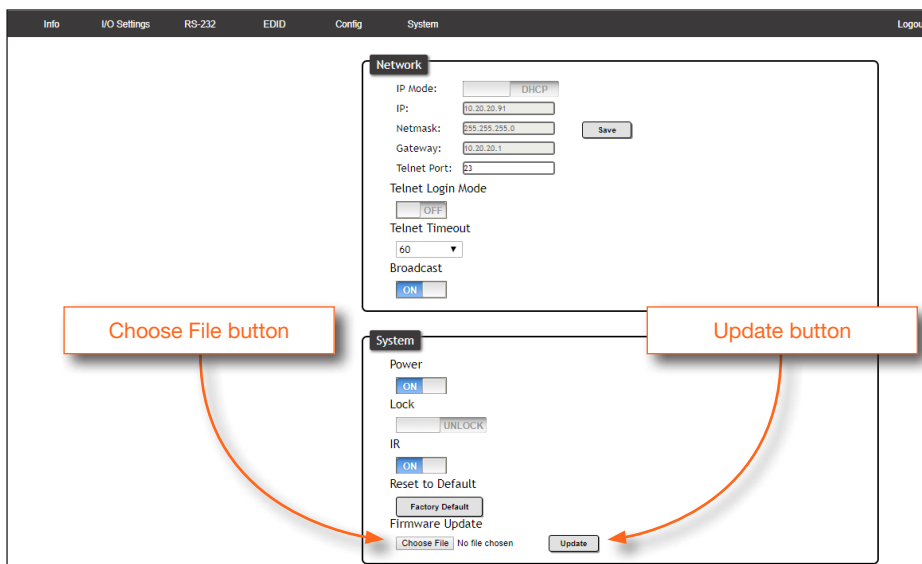
Update Instructions

Updating the firmware can be completed using either the USB interface or the web GUI. Atlona recommends using the web GUI for updating the firmware. However, if a network connection is not available, the firmware can be updated using a USB-A to USB mini-B cable. The update process for the AT-HDR-H2H product line is the same.

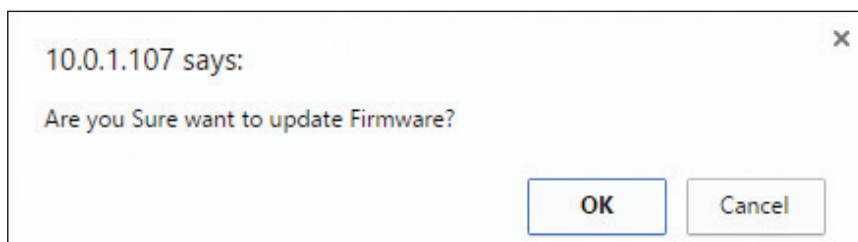
Using the web GUI

Requirements:

- New firmware - Downloaded from atlona.com
 - IP address of the AT-HDR-H2H-XX
 - Computer on the same network as the AT-HDR-H2H-XX
1. Make sure the unit is powered.
 2. Connect an Ethernet cable from the computer, containing the firmware, to the same network where the AT-HDR-H2H-XX is connected.
 3. Go to the **System** page in the web GUI.



4. Click the **Choose File** button, under the **System** section.
5. Browse to the location of the firmware file, select it, and click the **Open** button on the dialog box.
6. Click the **Update** button in the web GUI.



7. The following dialog will be displayed. Click the **OK** button to begin the firmware update process. Click the **Cancel** button to cancel the process.
8. After the update process has completed, the AT-HDR-H2H-XX will automatically reboot, and the **Login** screen will be displayed.
9. The update process is complete.

Using USB

Requirements:

- New firmware - Downloaded from atlona.com
- AT-HDR-H2H-XX
- Computer running Windows
- USB-A to USB mini-B cable

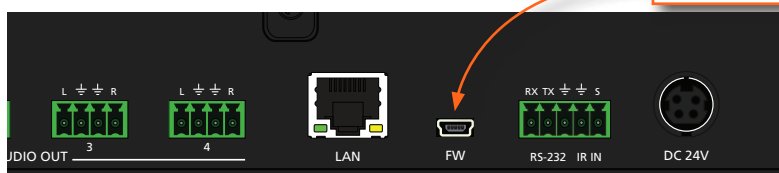
1. Make sure the unit is powered.
2. Press and hold the **CANCEL** button on the front panel, while connecting the USB-A to USB mini-B cable from the computer, to the **FW** port on the rear of the unit. Continue to hold down the **CANCEL** button until Step 3. The AT-HDR-H2H-44M is shown in this example.

Front Panel



CANCEL button

Rear Panel

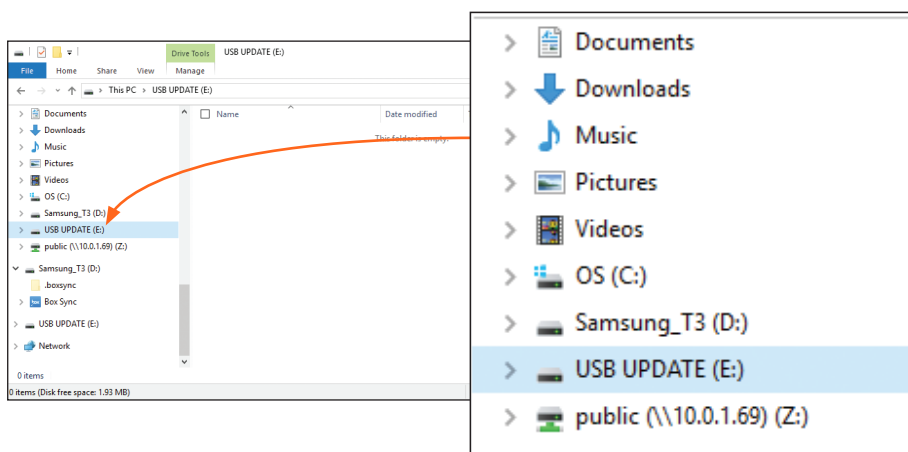


FW port

3. Release the **CANCEL** button once the USB UPDATE folder is displayed.

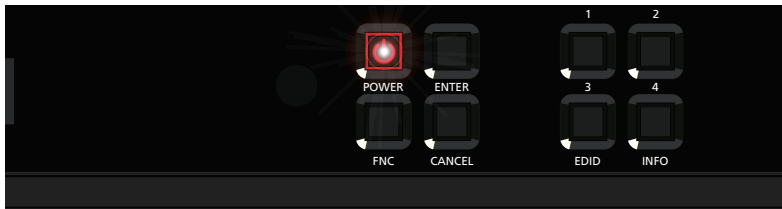
If this folder is not displayed, automatically, select the USB UPDATE drive from Windows Explorer.

4. Delete all files from the USB UPDATE drive, if any are present.
5. Drag-and-drop the firmware file to the drive.



Update Instructions

6. During the update process, the **POWER** button on the front panel will flash red.



7. Once completed, the AT-HDR-H2H-XX will automatically reboot. Once in the unit is in normal operating mode, the **POWER** button will return to a solid blue color.
8. Disconnect the USB cable from the unit and the computer.
9. The firmware update process is complete.